

**SERVICE INSTRUCTION MS 7-2010 E**

Sid/Page 1(2)

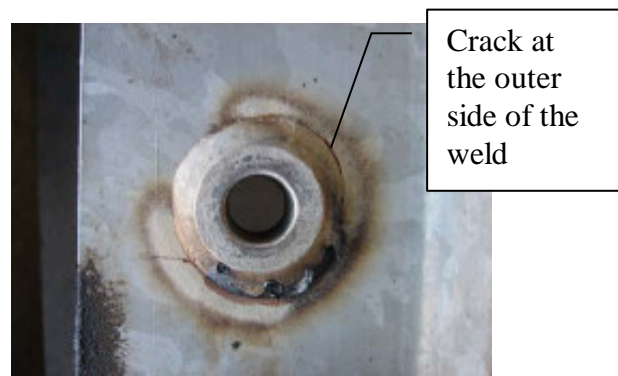
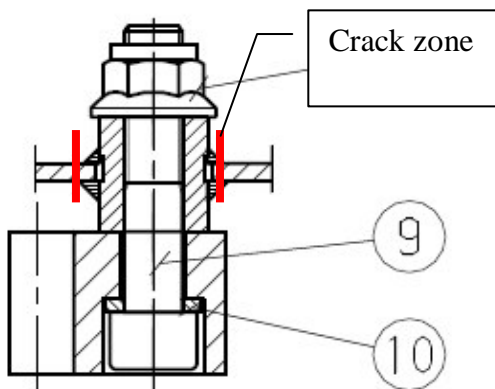
Utfärdare Issued by Aussteller <p style="text-align: center;"><b>Bertil Nyström</b></p>	Datum Date Datum <p style="text-align: center;"><b>2010-11-18</b></p>	Produkt Product Produkt <p style="text-align: center;"><b>Mast section part No. 9029 708-SUB</b></p>
Från maskin nr. From machine No. - Von Maschine Nr.	Till To Zu <p style="text-align: center;"><b>Manufactured from year 1997 to 2003</b></p>	Berör/Concerns/Betrifft <p style="text-align: center;"><b>Rack attachment</b></p>

This is an additional information document to earlier made **Service Message MS 8/2004 E** regarding supervision of the actual type of mast sections.

The rack attachment in the mast frames has in a few cases got cracks. This has happened when the mast sections have been used for heavy constructions hoists (excluding counterweight types) with high load capacities and possible overload conditions.

**We recommend that the rack attachments are inspected prior to the mast sections are used in a new hoist installation or every three (3) years for mast used with hoists in extended service installations. Make a visual check of the area close to the welded attachment sleeve.**

Check both front and back side of the mast frame close to the welded sleeve. Each rack has 3 attachment points. On a mast section with double racks there are 6 attachment points.



*Please forward this instruction to all people concerned before inserting it in your Service Manual under index 2, Service Instructions!*

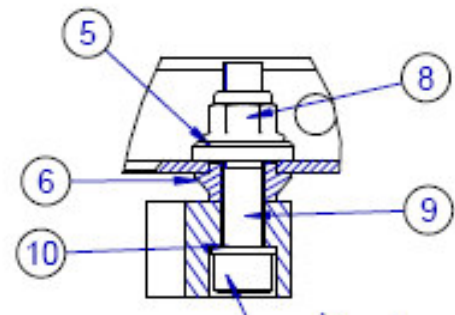
*Form approved by Patrik Sundqvist, After Sales Manager. Date: 2009-02-02*

**If cracks are discovered, we strongly recommend that the mast section is taken out of service and scrapped.**

Suitable replacement mast section is our new standard design. Part No. 9092 000-SUB.

For this mast section type, are following attachment components needed:

Washer	Part No. 3000 401-188	( 3 pcs. )
Sleeve	“ 9092 008-000	( 3 pcs. )
Locknut	“ 3000 674-124	( 3 pcs. )
Screw	“ 3000 147-636	( 3 pcs. )
Spring washer	“ 3000 095-186	( 3 pcs. )



**Note !**

If the mast section has two racks, the number of attachment components has to be the double.

**To clarify and order necessary replacement parts, please contact applicable AlimakHek representative.**

*Please forward this instruction to all people concerned before inserting it in your Service Manual under index 2, Service Instructions!*

*Form approved by Patrik Sundqvist, After Sales Manager. Date: 2009-02-02*