

**SERVICE INSTRUCTION MS 6/05 E**

Sid/Page 1(2)

Utfärdare Issued by Aussteller <b>Bertil Nyström</b>	Datum Date Datum <b>2005-08-12</b>	Produkt Product <b>CH hoists Scando 650 hoists SE lifts</b>
Från maskin nr. From machine No. Von Maschine Nr.	Till To Zu	Berör/Concerns/Betrifft <b>Screw attachment for rack 40 X 40mm, module 5</b>

**To improve the rack attachment on the mast a new design of the rack and a new screw have been applied. The previous washer behind the screw-head is also removed.**

**No action is required as to earlier delivered rack attachments.**

**Advantages:**

- Longer clamping distance for the screw
- The thread does not take the shearing force

**Others:**

- The new screw cannot be used for old racks
- When changing the rack, new screws shall always be applied
- Tightening torque 185 Nm
- When changing the older rack, part No. 9092005-000 is an exchange kit that includes new rack and new screw available. The part No. is 9102421-900

*Please forward this instruction to all people concerned before inserting it in your Service Manual under index 2, Service Instructions!*

*Form approved by Anders Nilsson, After Sales Manager. Date: 2005-02-28*

Utfärdare Issued by Aussteller <b>Bertil Nyström</b>	Datum Date Datum <b>2005-08-12</b>	Produkt Product <b>CH hoists                  Scando 650 hoists                  SE lifts</b>
Från maskin nr. From machine No. Von Maschine Nr.	Till To Zu	Berör/Concerns/Betrifft <b>Screw attachment for rack 40 X 40mm,                  module 5</b>

**Old design**

**New design**

**Old design**

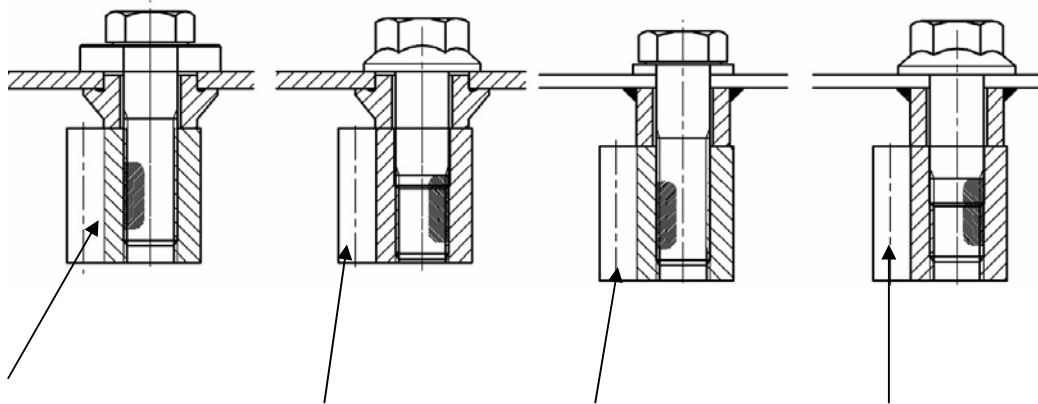
**New design**

**SE,SC 650 hoist**

**SE,SC 650 hoist**

**CH hoist**

**CH hoist**



Rack 9092005-000  
 Screw 3000071-932  
 Back stop 9092008-000  
 Washer 3000401-188

Rack 9102421-000  
 Screw 9102454-056  
 Back stop 9092008-008

Rack 9092005-000  
 Screw 3000071-932  
 Washer 3000401-188

Rack 9102421-000  
 Screw 9102454-056

**Note!**

**When changing rack or screw attachments on other designs than shown above, the original design with the part Nos. for the rack screw and washer shall be used. Please see the actual Spare Parts Manual!**

*Please forward this instruction to all people concerned before inserting it in your Service Manual under index 2, Service Instructions!*

*Form approved by Anders Nilsson, After Sales Manager. Date: 2005-02-28*