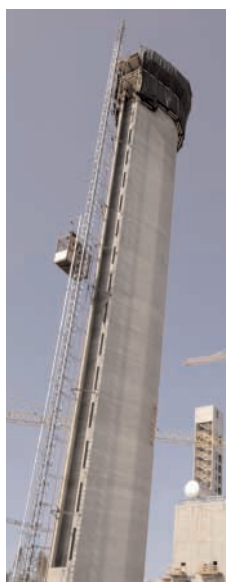


**Alimak lift at work:
Torsvik heat and power plant, Jönköping, Sweden**



Alimak lift improves accessibility at the new waste-to-energy plant, Torsvik

1303 Eng./Okt. -07



High above the ground towers the 120 meter-high chimney, through which purified smoke gas is released. Inside, an Alimak inspection lift has been installed. With eight landings, the lift makes access easier when it comes to inspection and maintenance of the chimney. The combined heat and power plant, Torsvik, is the power company Jönköping Energi's new main production unit for district heating. It turns up to 160,000 tons of waste per year, or 20 tons an hour, into heat and electricity – enough to cover the yearly need of 15,000 households.

Alimak lift provides better accessibility

Since waste consists of many different substances, the cleaning of the smoke gases after the combustion is essential to environmentally secure the discharge. The low level of remaining content is then released through the chimney, 120 meters off the ground, ensuring effective dilution in the high air.

During the completion of Torsvik's chimney, an Alimak construction hoist was used, and in November 2005 an ALIMAK SE 600 FC was installed inside the chimney. This permanent rack & pinion lift has eight landings to enable maximum accessibility. The lift is used for inspection and maintenance work. Since the chimney is so high, it has to have customized security lights to warn approaching airplanes. These lights have to be easy to reach and exchange. The plant's maintenance personnel also need easy access for the inspection of the smoke pipes.

Reduces costs

"With this construction we strive for higher efficiency and reduced costs," said Ingemar Granberg, project leader at Jönköping Energi. "Thus, it is important to be able to locate



sources of error, prevent damage, and quickly reach and attend to maintenance if something unexpected should occur. A properly working lift makes all of this easier. Another decisive advantage of Alimak rack and pinion lifts is that no machinery room outside the lift is needed. In a chimney, there is just no room for that! The rack and pinion technique also is very well-suited for high-rise buildings."

Alimak Hek has considerable experience with installations within the power industry. The lifts can be found on silos, chimneys, boilers, scrubbers, absorbers, precipitators, and so on, worldwide. In Sweden, there are Alimak lifts in heat and power plants in almost every city, from northern Kiruna to southern Malmö.

DETAILS

Location:	Combined heat and power plant Torsvik, Jönköping, Sweden
Application:	Chimney
Elevator type:	ALIMAK SE 600 FC
Capacity:	600 kg
Elevator car size:	1.04 m x 1.43 m x 2.17 m (W x L x H)
Speed:	1 m/s
Lifting height:	113 m

www.alimakhek.com

Alimak AB is ISO 9001 Certified

Pictures are illustrative only and do not necessarily show the configuration of products on the market at a given point in time. Products must be used in conformity with safe practice and applicable statutes, regulations, codes and ordinances. Specifications of products and equipment shown herein are subject to change without notice. Copyright © 2007 Alimak Hek Group AB. All rights reserved. Alimak Hek, Alimak, Scando and Hek are registered trademarks of Alimak Hek Group AB.

